



**Climate Smart
Forest Economy
Program**
Unlocking Forests' Potential

Climate Smart Forest Economy Program

Ulrike Linnig

7th Forest & Wood Innovation Forum

Wittstock / Dosse, 22 June 2023

A COLLABORATION BETWEEN: EIT CLIMATE-KIC AND
DALBERG



Climate-KIC is a climate innovation agency and **community** working to catalyse decarbonisation and resilience **transformations** through **systems innovation**

Incremental

Systems innovation

Transformational

Project finance model

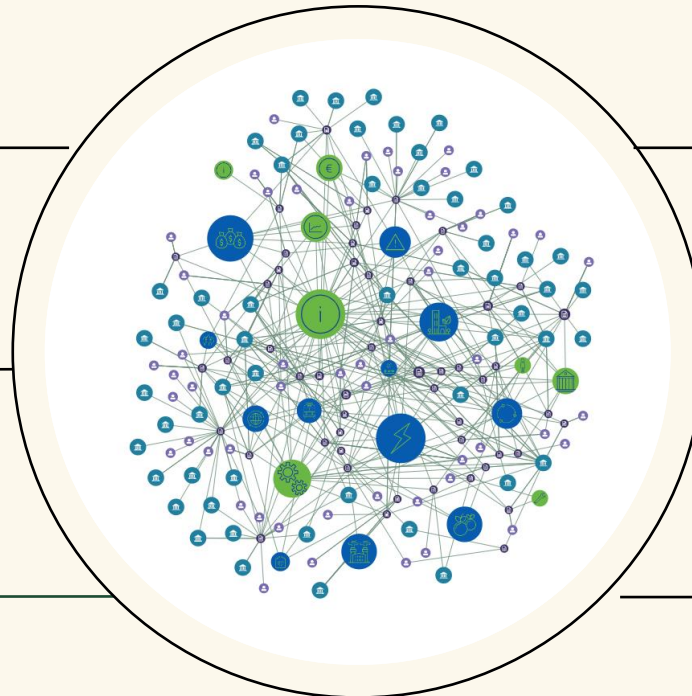
Portfolio finance model

Single projects and incremental change

Portfolio of connected innovation actions that learn from each other

Siloed and fragmented activities, often focused on technological improvements

Wide appreciation of change levers



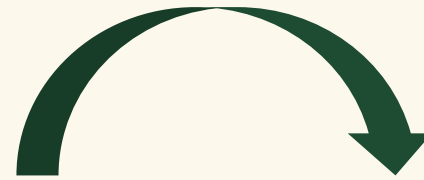
THE PROBLEM

To solve the converging crises of today, we must transform forests, cities, and the relationship between them.



FORESTS

Stopping deforestation, restoring forests, and improving forest management could remove 7 billion metric tons of carbon dioxide annually, equivalent to **eliminating all the cars in the world today.**



Globally, these are treated as two separate issues, and are attempted to be solved in siloes



CITIES

The world's urban population will double by 2050, necessitating the construction of an urban environment the size of Paris every week from now until 2050. The built environment produces 40% of CO2 emissions, making this a **climate emergency.**

THE SOLUTION

Creating a **holistic** system for Climate Smart Forest Products to **benefit forests**



With one holistic approach, we can address the multiple challenges facing forests and cities, linking them to form a single, connected value chain that maximizes the climate and social benefits.

Looking beyond these siloed challenges, we can maximize the **SINK** benefits of the forests, the carbon **STORED** in the wood products, and the fossil-carbon **SUBSTITUTION** of materials in the built environment.

THE OPPORTUNITY:

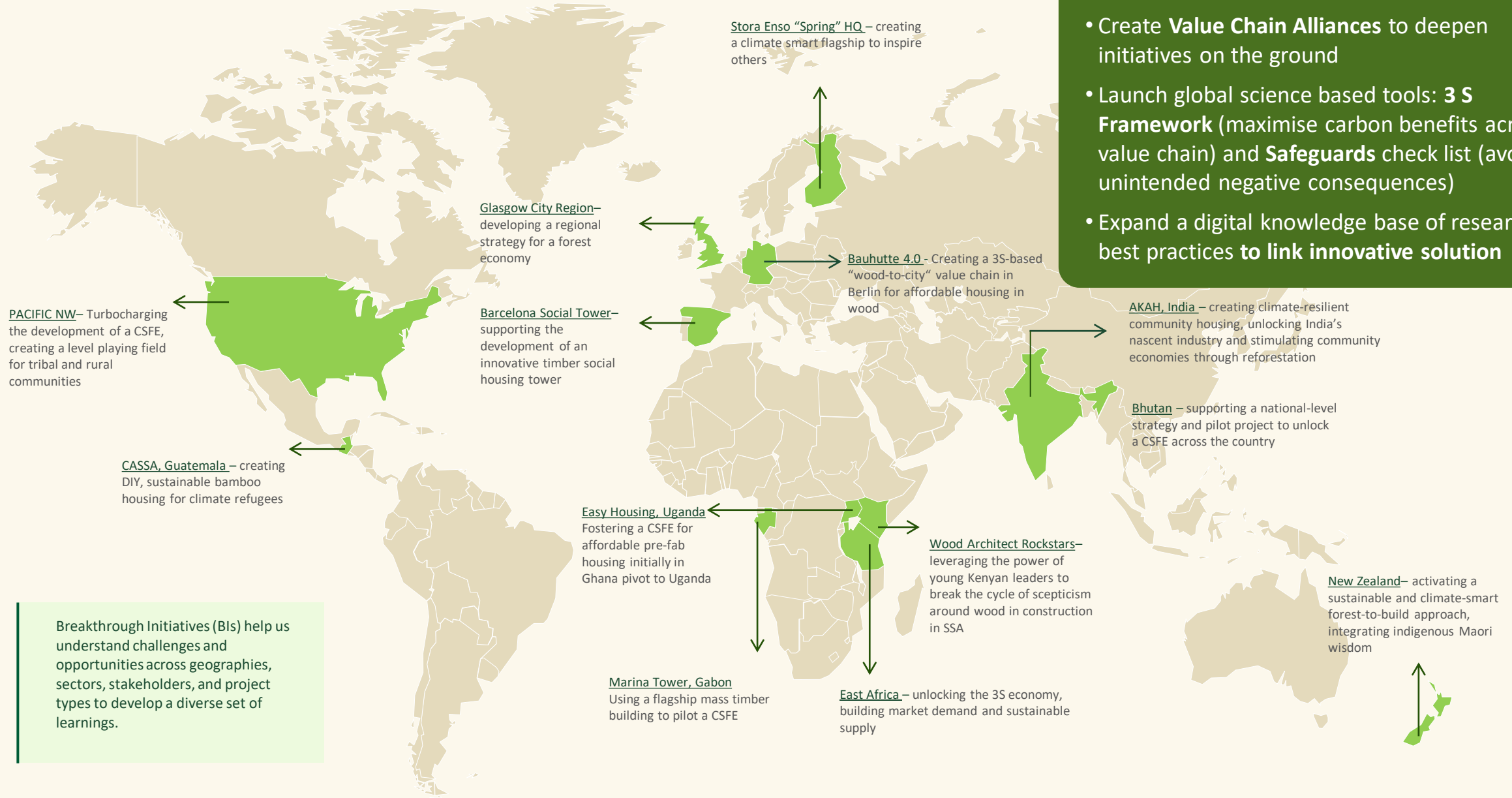
The Climate Smart Forest Economy Program

After completing a 2.5 year proof-of-concept, CSFEP is deepening and strengthening our approach. Aiming to grow at 50-100% annually, its scope is global, with a particular focus on the Global South, where growing populations are creating substantial opportunity for a climate smart solution that supports both forests and cities.

The Climate Smart Forest Economy Program is an **EVIDENCE-BASED ACTION HUB**, providing leadership and disseminating best practices for climate-smart activities relating to forests and wood products.

It provides:

- A thorough and growing body of core science, thought leadership, and perspectives, including a portfolio of innovative solutions and sustainable practices
- Rigorous and continuously improved set of evidence-based tools, including the [3S Framework](#) and [Safeguards Checklist](#)
- Real world implementation projects across multiple geographies that drive innovation, practical insights, and continuous scientific improvement of the 3S Framework
- Advocacy to advise and advance local and national policy environments



3 areas of work

- Create **Value Chain Alliances** to deepen initiatives on the ground
- Launch global science based tools: **3 S Framework** (maximise carbon benefits across the value chain) and **Safeguards** check list (avoid the unintended negative consequences)
- Expand a digital knowledge base of research and best practices to **link innovative solution**

Breakthrough Initiatives (BIs) help us understand challenges and opportunities across geographies, sectors, stakeholders, and project types to develop a diverse set of learnings.

KEY PARTNERS



INITIATIVE PARTNERS





Climate Smart
Forest Economy
Program

Join us in this critical transformation and be part of the global solution to climate change.

To learn more, reach out to
robyn.vandenheuvel@dalberg.com or
Ulrike.linnig@climate-kic.org.



Appendix

To achieve this holistic economy, we need a systems solution to create a new paradigm

Around the globe, communities—especially under-resourced communities—face barriers in shifting to a holistic forest-to-city economy. They need a partner who brings experience earned in multiple geographies, a clear understanding of the science – and who can support them in working at all three levels of change.



CHANGE MINDSETS

Providing Evidence-Based Tools and Knowledge that Shift Thoughts and Actions



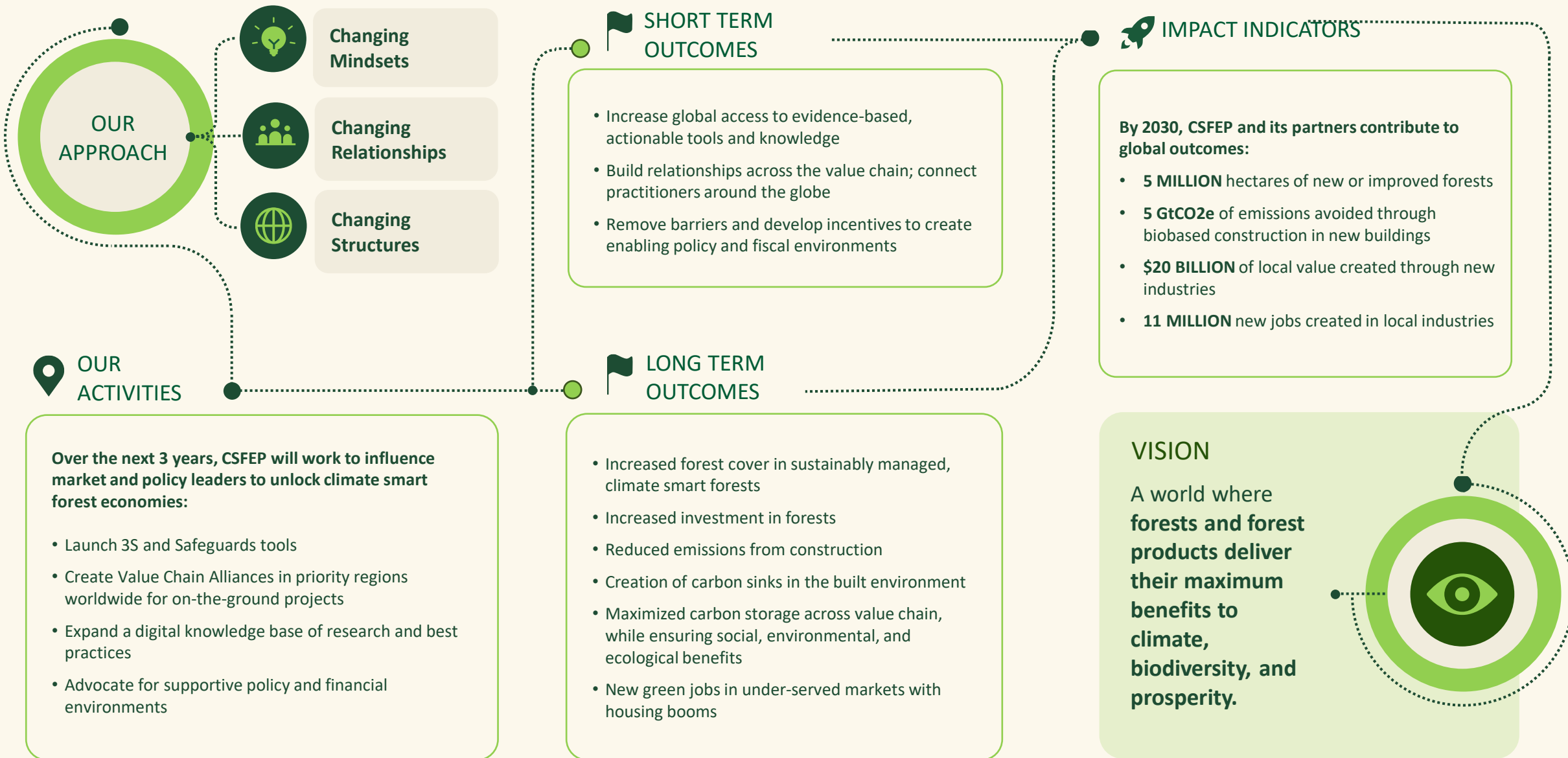
CHANGE RELATIONSHIPS

Growing Connections and Grassroots Power to Build a Movement



CHANGE STRUCTURES

Shifting Policies, Practices, and Resource Flows



The founding CSFEP Steering Committee brings a wealth of global experience in holistic forest-to-build projects



Jamie Lawrence
Co-Founder, Xilva

Jamie is a senior forest expert and entrepreneur who led the rollout and acted as funder liaison for CSFEP's proof of concept phase. He has worked as a practicing forester, auditor, and regional manager before going on to work as trusted counsel to the leadership teams of multinational companies, international NGOs, and philanthropies. Jamie speaks fluent Spanish, lives with his family in Spain, and oversees a family woodlot. He holds a BSc in Forestry having studied in Spain, the UK, and the Netherlands.



Daniel Zimmer
Sustainable Land Use Lead, Climate-KIC

In his current position, Daniel is developing and contributing to systemic global innovation projects in all land use domains - agriculture, forestry, nature - on behalf of the European Union. He has a global in-depth experience on climate and water related issues spanning from engineering to geopolitics. He was the Executive Director of the World Water Council for nine years, an international umbrella organization of the water sector. He holds an Engineering Degree from AgroParisTech and PhD in Hydrology from Sorbonne University.



Mokena Makeka
Principal, Dalberg Advisors

Mokena's passions lie in regenerative design, just ecology, and inclusive economies. Previous to Dalberg he has held a range of positions in green design and sustainable development, and has completed various executive leadership and business courses, including the Harvard Kennedy School and Oxford University. He is a Desmond Tutu Fellow, an Aliko Dangote Fellow, a 2020 Africa Leadership Aspen Fellow, and a member of the African Leadership Network. He holds a B.Arch. Dist. Hons, University of Cape Town.

Our Challenge: Current funding paradigms keep the status quo in place



Current funding paradigms result in a lack of holistic forest-to-build efforts, particularly in the Global South—which reinforces current funding paradigms in a negative feedback loop.

Invest with CSFEP to catalyze a global transformation

Climate smart forest economies are a key solution to climate change, biodiversity loss, consumer demand and growing economies—but the world must move quickly.

The need is urgent and **CSFEP is ideally positioned** to lead the change.

With your partnership, CSFEP can **mitigate 5 GTC02e** of carbon and contribute significantly to **holding global climate rise to less than 2°C**.

CSFEP is looking to **raise \$2M per year** to accelerate its work over the next 3 years, and is looking for innovative partners to join us.

